



Forest Park School News

2050 Latimer Rd. Nanaimo, B.C. V9S 2W5 Phone: 758-6892 Fax: 758-2373 schools.sd68.bc.ca/fore

Principal: Mrs. Jacquie Poulin
Vice-Principal: Jim Pascoe

Secretaries: Cathy Peace
Karen Dendes

January 29, 2016

PRINCIPAL'S COMMENTS

Welcome back to everyone! I hope this newsletter finds everyone well and having enjoyed the first month of the New Year. It was great to see everyone come back with so much energy. It was great to hear from students on what they did over the break.

January often brings 'resolutions', and although it is now near the end of the month, there is one resolution I would like to suggest for all of our families. One thing that can make a large difference in a child's education is a parent's involvement. I encourage all of our parents to continue to be involved in their child's education by:

- reading to or with them each night and talking about the books they are reading
- making sure there is a place and time to do homework, and
- connecting with their classroom teacher if there are any questions.

I know many of our families already do these things, and thank you for your support, just thought it is always good to be reminded of the importance of that involvement.

Looking forward to a great second half of the year, thank you again for all your support with your own child and within the Forest Park community.

Yours in education,
Mrs. Jacquie Poulin



PRINCIPAL'S SHINING EXAMPLE

Congratulations are extended to the following students who have earned a special recognition through the Principal's Shining Example program. This student recognition program is a wonderful way of showcasing student's work on a weekly basis throughout the year reflective of the activities and projects under study in the classroom. For this issue of the newsletter, tip of the hat goes to: the names have been removed from this online version for safety and privacy. These names appear on the newsletter sent home to parents.

PAC MEETINGS

The PAC monthly meetings are open to all parents of the Forest Park community. It is an excellent opportunity for parents to get involved in matters concerning educational issues and provide support to the programs and activities at the school. Parents new to the school community as well as parents who have not as yet become involved in this consultative committee process are encouraged to attend. The next scheduled meeting is **Tuesday, February 9th**, starting at 7:00 p.m. in the Library. Please note the change to a Tuesday evening for the meetings. We hope to see you there!

THANK YOU

A big thank you goes out to our whole community in their incredible generosity once again. Before Christmas, we held a food drive and collected a large amount of non-perishable items to donate to the Salvation Army for needy families over the holidays. Many families were able to receive food thanks to the generosity of our school. We would also like to thank the PAC for organizing a "Silent Auction" at our Holiday Family Craft Night which was a big success. Thank you!



LIBRARY NEWS:

This year we are excited about reading more great books! Our intermediate classes (Divisions 11-16) are excited about finding interesting books within the library and getting to give book reviews on books they loved! Intermediate classes have also been using the Ipod's as a resource to expand their learning. Primary classes (Divisions 1-10) are setting and reaching their goals of choosing "Good Fit Books" and are also reviewing books as we read them. Ms. Carver is always accepting new book reviews or requests to keep our students finding and reading books they love!

FAMILY LITERACY DAY

In celebration of Family Literacy Day 2016 this January 27, ABC Life Literacy Canada is encouraging families to have "15 Minutes of Fun" learning together. Check out their site <http://abclifeliteracy.ca> for ideas such as "Create a story with your family: take turns writing one sentence at a time, then read the whole story aloud when you're done!"

READING LINK CHALLENGE

We have 13 eager grade five students (2 teams) that will be participating in the annual Reading Link Challenge trivia game and are now reading the 6 books. We will be having a practice challenge in February and our school level challenge will be near the end of February in the gym. Our winning team will head to the public library (date TBA) to compete against other schools in the district. Having won the district competition in previous years, our Forest Park teams have their team shirts made up and are excited to once again be a part of this fun and friendly reading competition!



MEND PROGRAM

This February the City of Nanaimo is offering a fun, FREE program that empowers children and their families to become fitter and healthier. MEND (Mind, Exercise, Nutrition, Do it!) is a program for families with children ages 7 to 13 who are looking to lead a healthier lifestyle. Families learn about healthy eating and physical activity and parents get a chance to speak to other parents about issues

such as how to deal with picky eating, too much screen time, and share healthy recipe ideas.

Families who complete the program will receive free passes to the recreation centres in Nanaimo to help them continue on their path to achieving a healthier lifestyle.

KINDERGARTEN REGISTRATION INFORMATION

Regular English Kindergarten Program Registration for 2016-17

Registration for the regular English Kindergarten program for September 2016 started at all elementary schools on Monday, January 4, 2016. Complete information about registration is available on the school district website www.sd68.bc.ca

Detailed information is available at www.sd68.bc.ca



SAFE SCHOOL REMINDERS

Thank you for your support of this important safety information:

- Students are to arrive at school around 8:25 a.m. unless they have a specific meeting or practice. Supervision does not start until that time.
- Students are reminded to head straight for home after school and check in before going off to play unless there is a specific plan that has been made previously with parents.
- Personal cell phones are only permitted at school if parents require them for safety contact. They must be stored in children's back packs or at the office. They may not be used during school time. Please remember the school is not responsible for lost or stolen cell phones.
- Children are asked to play by the area of the school where direct supervision is provided. The front of the school and near the parking lot areas are unsafe and out of bounds for play.
- When you come to the school during the day, please always check in at the office before going to a classroom.

Thanks for your cooperation with these important safety concerns.

DRESSING FOR THE WEATHER



Our weather has been quite inconsistent over the last few weeks with some days being quite warm and others quite cold. Although we have not yet had much snow yet, we might in the future. We do appreciate it when parents

ensure that their child comes to school properly dressed for the West Coast type of climate. Students need, and many want, to be outdoors so that they can socialize, run, play and use up some of their excess energy after being indoors for long periods of time. They need boots, rain jackets, and a hood or umbrella. It would be helpful if their outdoor clothing were labeled as well. Thank you for your support in this regard.

SCHOOL CLOSURE REMINDER

Occasionally, schools are temporarily closed on short notice for emergency reasons. A heavy snowfall is the most frequent reason for emergency school closure; however, individual schools can also be closed because of power or heating failures. The following emergency school closure situations are possible.



□ ***Morning school closures*** -

announcements will be on local radio stations: Wolf 106.9 FM and Wave 102.3 FM by 6:45 a.m. or go to the school district website - <http://www.sd68.bc.ca/>

□ ***Schools may be dismissed during the day and students sent home.*** - When schools are closed during the day, radio stations will have announcements. If this were to occur, parents and caregivers would be contacted before students were dismissed.

The Superintendent of Schools, in consultation with the Transportation Supervisor, makes the decision to close schools. In most circumstances the school district does not close schools early (in the middle of the day) because of the concerns associated with ensuring that there will be someone there when students arrive home early.

VANCOUVER ISLAND UNIVERSITY

DENTAL ASSISTANT PROGRAM

Your child has the opportunity to receive any of the following services: polishing, fluoride application, sealants and/or x-rays. A flat fee of \$20.00 will be charged for children (12 years and under). Appointment dates will be from April 25 to May 19, 2016.

Parents, if you are interested in bringing your child to the clinic, please call the Dental Clinic at 250-740-6240. Leave a message and your call will be returned.



ONGOING PARKING ISSUES

The parking issues around drop-off and pick-up continue to be a concern for many here at Forest Park. We all realize that there is not a lot of parking, however, we do need to make the best of what we have, please remember the following:

- Student safety is our number one concern, please drive slowly and watch carefully for students that may be walking out from behind a parked car.
- Please do not park at the front of the school where the curb is painted red or yellow, this is intended for drop-off or pick-up only - not a spot to stop and wait.
- Please be aware of the handicap parking spaces and respect that they are only for vehicles that are transporting individuals who need to have closer access to the building.
- Please be a 'good neighbour' and respect driveways and parking spaces of homes and businesses around our school.

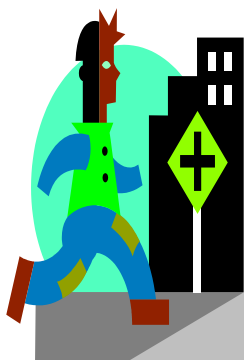
Thank you for helping us to ensure the drop-off and pick-up is as smooth and safe as possible.



PLC DAYS

The staff at Forest Park have been busy during PLC days working on developing strong strategies that align with our school goals. Many of these strategies have already been implemented in classrooms and teachers feel they are helping improve student learning.

ROAD SENSE



We have additional concerns with road safety with students not using the designated crosswalks on Bowen Road. It has been brought to our attention by concerned motorists and local business owners, parents and staff that students are darting out into traffic rather than using the appropriate marked

crosswalks. Please remind your children of the dangers of running out into traffic and to only use the crosswalk when crossing any road.

MARK YOUR CALENDARS - SPRING CONCERT

Be sure to mark Thursday, April 14th on your calendars as you won't want to miss our Spring Concert - "Rock the Salish Sea". Our students are going to have the amazing opportunity to work with guest musicians, learn some fabulous songs, learn more about the environment, and perform on the Port Theatre stage. More details will be coming out soon but please be sure to keep this date booked on your calendar!



DATES TO REMEMBER



February

- Feb. 1 - 12 Trades Trailer on site for all intermediate classes
- Wed., Feb. 3 PAC Family Movie Night
- Thurs., Feb. 4 12:45 - Staff vs. Gr. 7 volleyball game
- Mon., Feb. 8 Family Day - schools closed
- Tues., Feb. 9 PAC mtg - 7 pm - Library
- Wed., Feb. 10 Jump Rope for Heart Day
- Mon, Feb. 22 Pro-d Day- students not in session
- Tues., Feb. 23 Pro-d Day - students not in session
- Wed., Feb. 24 Pink Shirt - Anti-Bullying Day
- Fri., Feb. 26 Whole School "Read to Self"

March

- Wed., Mar. 2 Term 2 Celebration - Div. 8 - 16 swimming at NAC
- Mon., Mar. 7 Term 2 Celebration - Div. 1 & 2 Bowling
- Tues., Mar. 8 Term 2 Celebration - Div. 3 & 4 bowling
- Tues., Mar. 8 PAC mtg - Library - 7 pm
- Wed., Mar. 9 Term 2 Celebration - Div. 5 - 7 bowling
- Wed., Mar. 9 Term 2 Reports go home
- Fri., Mar. 11 Whole School "Read to Self"
- Fri., Mar. 11 Last day before Spring Break
- Mon. Mar. 28 Easter Monday
- Tues., Mar 29 First day back from Spring Break

April

- Fri., Apr. 8 1:15 Staff vs Students Basketball game
- Tues., Apr. 12 PAC mtg - Library - 7 pm
- Thurs., Apr. 14 Evening - Rock the Salish Sea (Port Theatre)
- Wed., Apr. 20 Whole School BBQ
- Fri., April 22 Earth Day
- Fri., Apr. 29 Whole School "Read to Self"